

# KIRIMAYA

Distinctively natural...

## Introduction:

Kirimaya is a high-end nature retreat just two hours from Bangkok and will be the first boutique luxury resort in Khao Yai ("Big Mountains"). Nestled at the edge of the revered Khao Yai National Park, the Kirimaya Experience includes the discovery of nature's gifts wellness spas and the exhilarating challenge of a pristine championship golf course designed by Jack Nicklaus.

The area around Khao Yai rises from 400 m to 1351 m above sea level where temperatures are considerably lower than Bangkok. It can be especially cool during the winter months of November till February. Huge numbers of flowering trees and shrubs, in addition to wild orchids and other rare plants, bloom from December to May. Winter is also the best time to spot wild elephants. In February, birds come into full song with the onset of the mating season; sightings of migrant winter birds from further North can be spotted up till May. Warm season is from March to May with many lovely flowering trees. In June, the rainy season starts and normally lasts until the end of October. From middle June up to the end of July, many wild orchids bloom and many different beautiful butterflies can be seen. During this season, it rains 2-3 hours during the daytime and Khao Yai often changes into a "forest in the mist", that many holiday makers find extremely charming.

## Location:

Only 2 hours drive from Bangkok, Kirimaya is located at the edge of Khao Yai National Park, known for its lush tropical rainforest, wild animals, exotic scenic nature trails and majestic waterfalls.

- Owners: Kirimaya Company Limited
- Designers: Mr. Amuparb Omsa-ard  
ISM Interior Architecture Workshop (Resort buildings)  
Mr. Nawat Thongsawang  
Februar Image Company Ltd (clubhouse)

## Accommodation:

- 30 Plantation View rooms (Lower level / 42 sq m) each with private balcony
- 22 Horizon View rooms (Upper level / 42 sq m) each with private balcony
- 4 Terrace Suites each with terrace (84 sq m)
- 4 Tented Villas with private spa pool (180 sq m)

## Room Amenities:

- Balcony Daybed with a view
- Cable TV
- LCD screen in Suites and Villas
- DVD/CD player
- IDD telephone line with voice mail
- Wireless high-speed internet access
- Safe deposit box
- Mini bar; Tea & coffee making facilities
- Bathrobe, slippers and hair dryer
- Full set of bathroom amenities
- Turn-down amenities

## Food & Beverage:

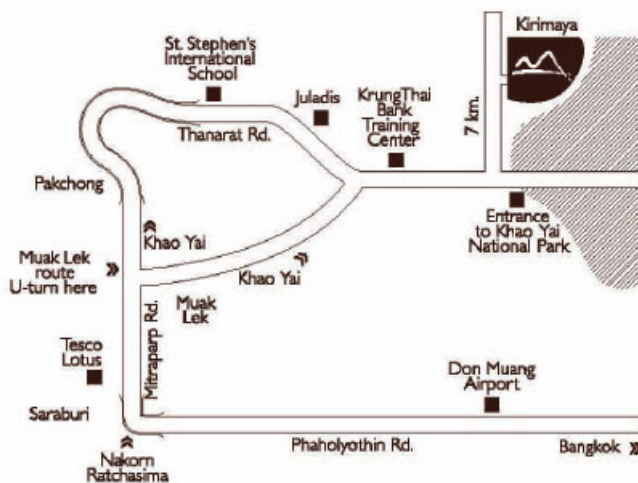
- T-19
- Acala Restaurant
- The Mist Bar

## Conference Facilities:

- Executive Boardroom & Secretariat for 14 persons
- Classroom conference for 120 persons
- Banquet Dining Room for 110 persons
- Multipurpose Room for 110 persons
- High speed wi-fi system

## Golf:

- A world class 18-hole, par 72 championship golf course designed by Jack Nicklaus
- Clubhouse with locker rooms, pro shop, a restaurant, conference and recreational facilities



## Recreation Facilities:

- Maya Spa - Signature treatments using local natural products and treatment techniques.
- 3 private massage pavilion suites with a double massage area, a spa pool and 2 steam rooms.
- 2-indoor Thai treatment rooms
- 2 outdoor massage areas
- Kirimaya Fitness Centre (Life-fitness equipped gym)
- Aerobic / Tai chi and yoga room
- Beauty salon
- Maya Spa Gallery
- Children playground
- Outdoor Swimming pool

## Services:

- In-room dining
- Leisure concierge
- Laundry & pressing
- Golf buggy carts and caddy service
- Airport transfer upon request
- Shuttle to local village

## Things To Do At KIRIMAYA

### Khao Yai National Park

Khao Yai National Park main gate is located only eight kilometres from Kirimaya. Half-day, full day and night safari tours are available.

### Phi Mai Historical Park

One of the most important Mahayana Buddhist temples in Thailand, Prasat Hin Phimai was built between the 11th-12th centuries in the Khmer style. Visitors will recognize the architectural similarities to the temples at Cambodia's Angkor Wat. Located approximately one hour and 45 minutes by car from Kirimaya

### Chockchai Farm

A fun and educational adventure for the entire family! A working dairy farm, Chockchai offers visitors the chance to hand milk a cow, take a hay ride and enjoy the fresh products including charbroiled steaks and homemade ice creams. In the cowboy tradition of the Khao Yai region, Chockchai is also a cattle ranch with rodeo performances, a petting zoo and souvenirs of the Thai Wild West. Located approximately 25 minutes by car from Kirimaya.

### Horse Riding

Chockchai Farm offers guided horse riding. Guests should wear sturdy pants and shoes for this activity.

### Elephant Trekking

Mount these majestic creatures for an authentic jungle journey. (Located 10 minutes by car from Kirimaya at "The Jungle House")

### GranMonte Winery

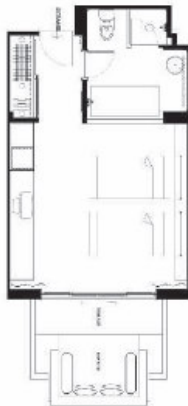
A picturesque local winery producing grapes of four varieties including Shiraz, Cabernet Sauvignon, Tempranillo and Chenin Blanc. More than 25,000 bottles of red wine and 10,000 bottles of white wine are produced here annually. GranMonte offers wine and grape juice tasting as well as guided tours of the wine making process. (Located approximately 45 minutes by car from Kirimaya)

### Pakchong Night Market

Craving a snack of fried grasshoppers? Wander through our local fresh market, open nightly. Discover these and other Khao Yai delicacies. Fill up on exotic treats or sit down to an authentic Thai meal at a picturesque restaurant along the river. (Located approximately 35 minutes by car from Kirimaya)

### Off-Site Dining Options

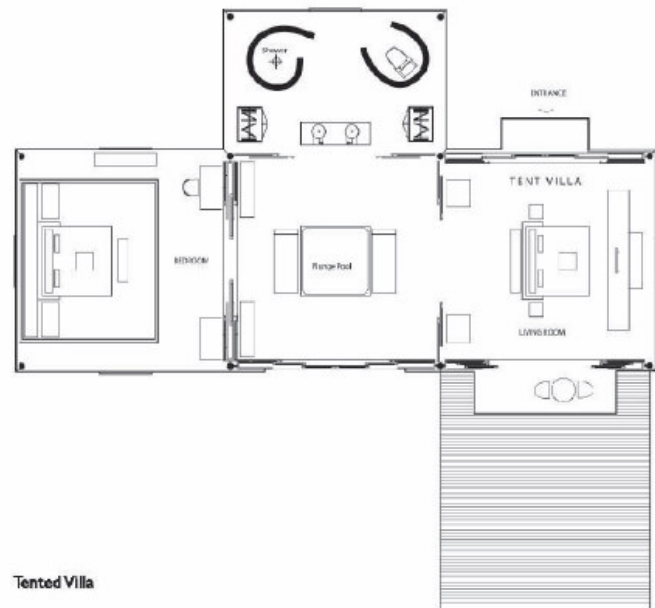
Should you wish to explore the culinary adventures around Khao Yai, we can arrange transport to and from outposts of famed Bangkok restaurants as well as nearby local favourites. Menus are available at Reception for your consideration (Located within 20 minutes by car from Kirimaya)



Plantation View -  
Horizon View, 2nd level



Terrace Suite



Tented Villa

Bangkok Sales Office

10<sup>th</sup> Floor Tonson Tower,  
900 Ploenchit Road,  
Pathumwan, Bangkok 10330,  
Thailand  
Tel: +66 (0) 2257 0455-7  
Fax: +66 (0) 2257 0459  
dos@kirimaya.com

Reservations (Resort)

Kirimaya  
1/3 Moo 6 Thanarat Road,  
Moo-Si, Pakchong,  
Nakorn Ratchasima 30130,  
Thailand  
Tel: +66 (0) 44 426 000/099  
Fax: +66 (0) 44 929 888  
book@kirimaya.com



Call your local travel agent or book online at [www.kirimaya.com](http://www.kirimaya.com)